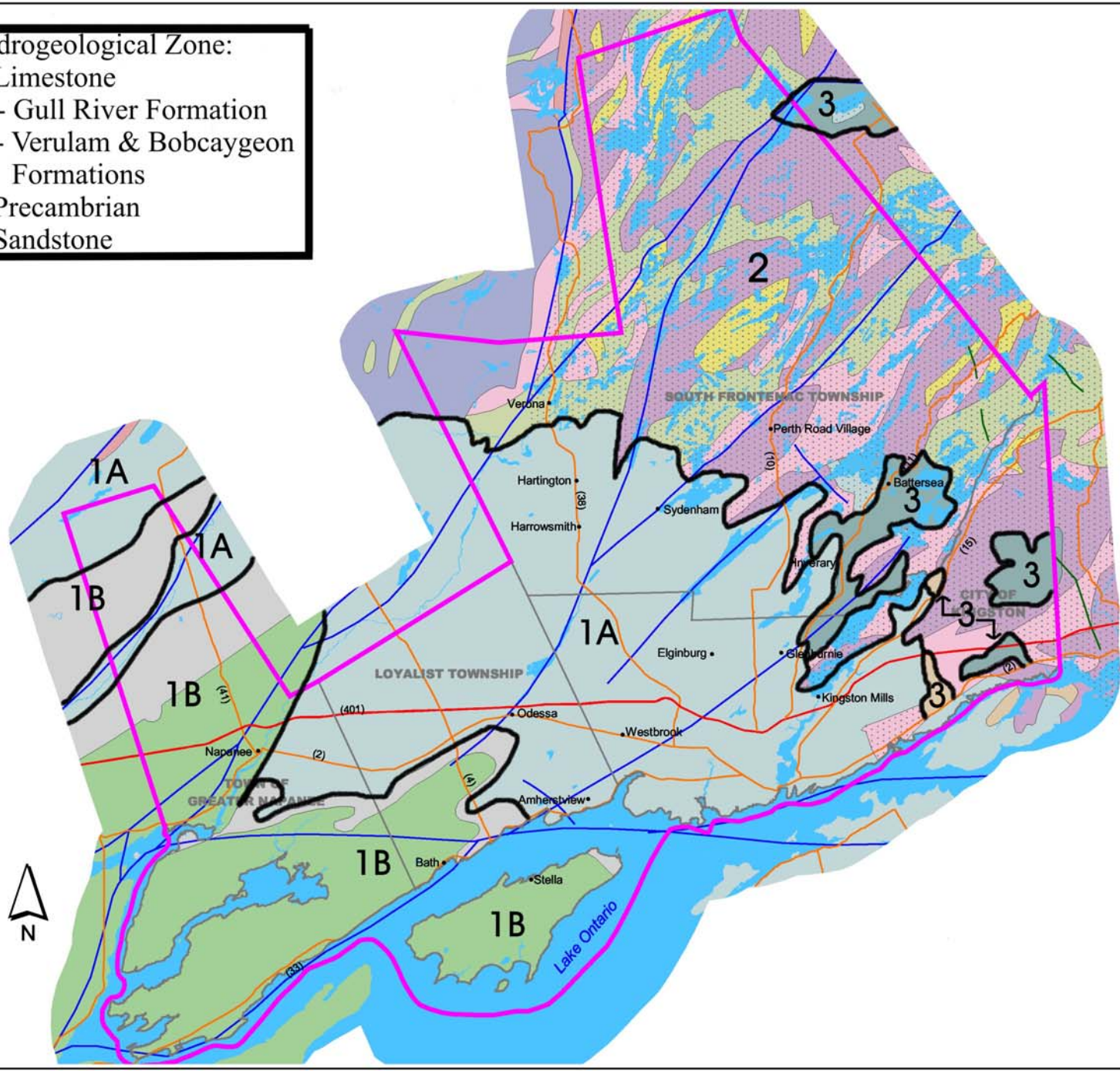


Hydrogeological Zone:
 1- Limestone
 1A- Gull River Formation
 1B- Verulam & Bobcaygeon Formations
 2- Precambrian
 3- Sandstone



Legend

- Study Area
- Municipal Boundaries

Transportation Routes


- Secondary Roads
- 401
- Water Course

Bedrock Geology

- Dikes
- Faults
- Granulite (metamorphic facies)
- Gull River Fm. Limestone
- Bob Caygeon Fm. Limestone
- Verulam Fm. Limestone
- Dolostone, sandstone: Beekmantown Gp.
- Conglomerate, sandstone, shale, dolostone: Potsdam Gp.; Nepean Fm.; Covey Hill Fm.
- Tectonite unit.
- Late felsic plutonic rocks.
- Mafic to ultramafic plutonic rocks.
- Early felsic plutonic rocks.
- Carbonate metasedimentary rocks.
- Clastic metasedimentary rocks.

Note: Source: Ontario Geological Survey - ERLIS data Sets & Map P.2011
 1. Limestone Formations compiled from other sources. They are generalized and approximated only.
 2. Supplementary geological faults data has been obtained from other sources. This is generalized and approximated only.
 3. Granulite refers to moderate to high metamorphism of the rocks due to heat and/or burial at depth.
 Projection: UTM NAD 83 Zone 18

Executive Summary Figure 2


 1 : 300 000

